

# MONTHLY MEMBERSHIP PROGRESS REPORT

LOCATION INDIA

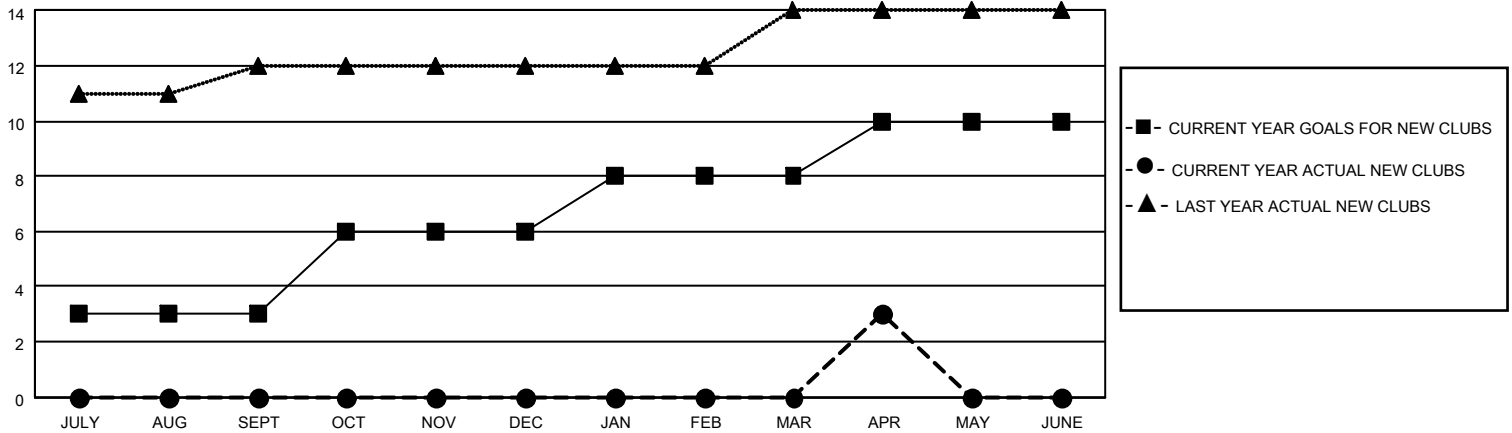
District 3232B2

Results as of: 4/30/2023

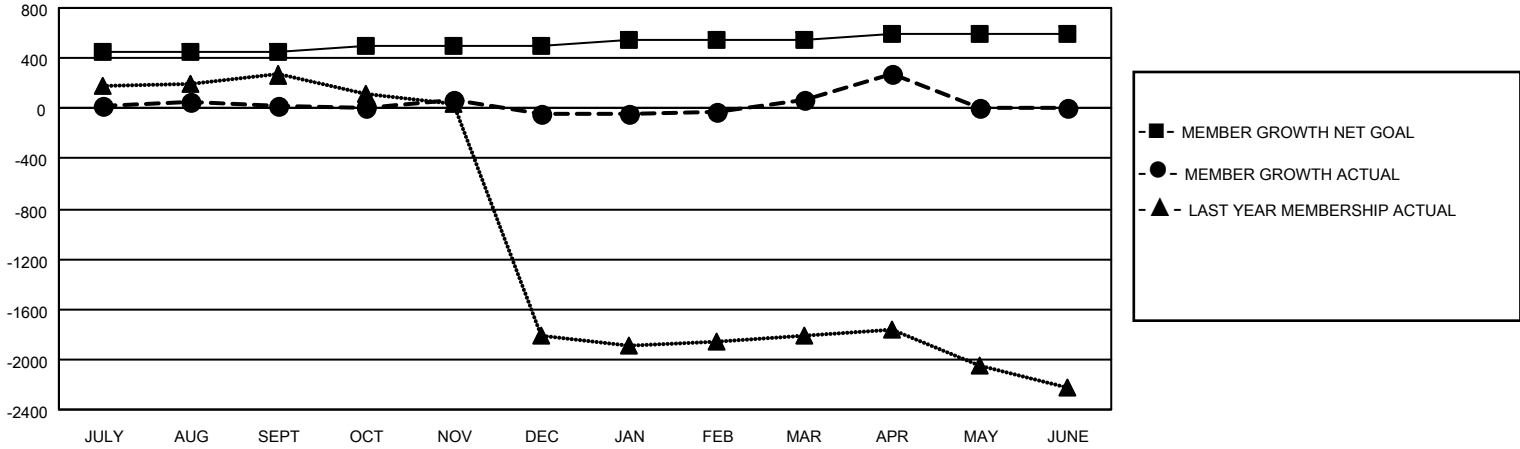
Clubs			
RESULTS FOR 2022-2023			
QUARTER	NEW CLUB GOAL	NEW CLUBS	DROPPED CLUBS
JULY/AUG/SEPT	3	0	56
OCT/NOV/DEC	3	0	4
JAN/FEB/MAR	2	0	1
APR/MAY/JUNE	2	3	0

Members			
RESULTS FOR 2022-2023			
QUARTER	MEMBER GROWTH NET GOAL	MEMBER GROWTH ACTUAL	DROPPED MEMBERS ACTUAL (including transfers)
JULY/AUG/SEPT	450	119	87
OCT/NOV/DEC	50	228	275
JAN/FEB/MAR	50	138	18
APR/MAY/JUNE	50	222	10

**GOALS AND ACTUAL NEW CLUBS CUMULATIVE**



**GOALS AND ACTUAL MEMBERS CUMULATIVE**



**DROPPED CLUBS: 61**

**79 CLUBS OF 183 ADDED 1 OR MORE NEW MEMBERS**

**GENDER DISTRIBUTION**

MALE	2,563 (55.44%)
FEMALE	2,060 (44.56%)
NON BINARY	0 (0.00%)
PREFER NOT TO ANSWER	0 (0.00%)

**DROPPED MEMBERS**

[CLICK HERE FOR CUMULATIVE MEMBERSHIP DATA](#)

DECEASED	4
CLUB CANCELLED	49
OTHER	337
<b>TOTAL</b>	<b>390</b>

TOTAL FAMILY UNIT MEMBERS 3,998

FAMILY MEMBERS PAYING HALF DUES 2,930